



nitidæ
filères & territoires

ANNUAL REPORT

2 0 2 4



The year 2024 marks a new stage in Nitidæ's development. The association's total budget stands at €8,322,254, a slight increase compared to 2023. The net result is €146,986, reflecting the association's good financial health and a strengthening of its equity capital. Budgets per country remain stable, confirming the solidity of our presence in the field.

Several milestones marked the year. The opening of an office in Cameroon and the effective start of activities in the country strengthen our foothold in the Congo Basin. Furthermore, 2024 will see the continuation of our expansion strategy with the exploration of new areas of intervention in Tanzania and Namibia. The significant increase in the volume of services provided, which now represents one-third of the association's overall budget, reflects the growing recognition of Nitidæ's technical expertise. This lever is a strategic resource for supporting our activities while diversifying our sources of funding.

With a view to improving efficiency and adapting to the growing complexity of our activities, we have also undertaken a major internal reorganisation, structured around technical divisions: *sectors and markets, agroecological transition, bioenergy and Nitidæ Lab*. This structure aims to better leverage our skills, strengthen synergies between teams and improve the impact of our interventions.

Funding for international solidarity is declining sharply, causing real concern for humanitarian and development NGOs, which are being forced to reduce their staff and activities. In this uncertain context, Nitidæ is demonstrating its resilience, even growing stronger, and remaining faithful to its mission: to combine environmental preservation, economic development and human progress. The fight against poverty and the reduction of inequalities remain at the heart of our priorities. Our projects are based on solid scientific foundations thanks to our NLab technical centre, which is committed to excellence. More than ever, the climate emergency and the protection of biodiversity justify our actions.

Denis LOYER, Chairman
Matthieu TIBERGHIE & Cedric RABANY, Co-directors

association3

areas of expertise4

countries9

financial report15

governance16

partners17

editorial





key figures

**12 directors and
262 employees** (see map)

**Intervention budget €8,322,254,
around thirty active projects
and as many services**

Our 6 "Biodiversity and development" landscapes

- PONASI complex in Burkina Faso
- Comoé and Mabi Yaya in Ivory Coast
- Gilé and Namuli in Mozambique
- Anosy region in Madagascar

6 representations

- Burkina Faso
- Cameroon
- Ivory Coast
- Madagascar
- Mozambique
- Senegal

But also

Many other countries of intervention in 2024:
Uganda, Sao Tome, Namibia, Tanzania, Burundi, etc



our vision

**Balancing the preservation of natural capital
with economic dynamism in rural areas**

areas of expertise

4 technical hubs

- Markets & Sectors
- Agroecological Transitions
- Nitidæ Lab
- Energy





areas of expertise

Markets & Supply Chains

Nitidæ's Markets & Supply Chains (M&S) division brings together employees with expertise in analysing agricultural value chains and their impact on landscapes and populations. Its mission is to provide agro-socio-economic knowledge and methodologies to understand the dynamics of supply chains and improve their functioning and sustainability.

The experts in the M&F division are mobilised by Nitidæ's projects to strengthen their market and sector components, and conduct studies for the benefit of various external partners: donors, investors, private companies, NGOs, UN or government agencies, etc. These services take different forms depending on the needs expressed and the scale in terms of scope:

- **Macro/meso scope**, at sub-regional, national or territorial level: market research, value chain analysis, public policy advice, feasibility studies/support for quality and/or origin labels (geographical indications, collective labels, etc.), etc.
- **Micro scope**, for a specific supply chain, project or company: project evaluation, due diligence process commissioned by an impact investment fund, CSR audit, support for the implementation of supply/traceability systems, carbon feasibility, etc.

The year 2024 saw some twenty studies conducted in a dozen countries, with Ivory Coast leading the way. These mainly concerned the cashew nut sector, but also cocoa, shea, cereals (rice, maize, etc.) and biochar, with many of them covering several sectors at once. Below are some examples of the projects and studies conducted by the cluster in 2024:

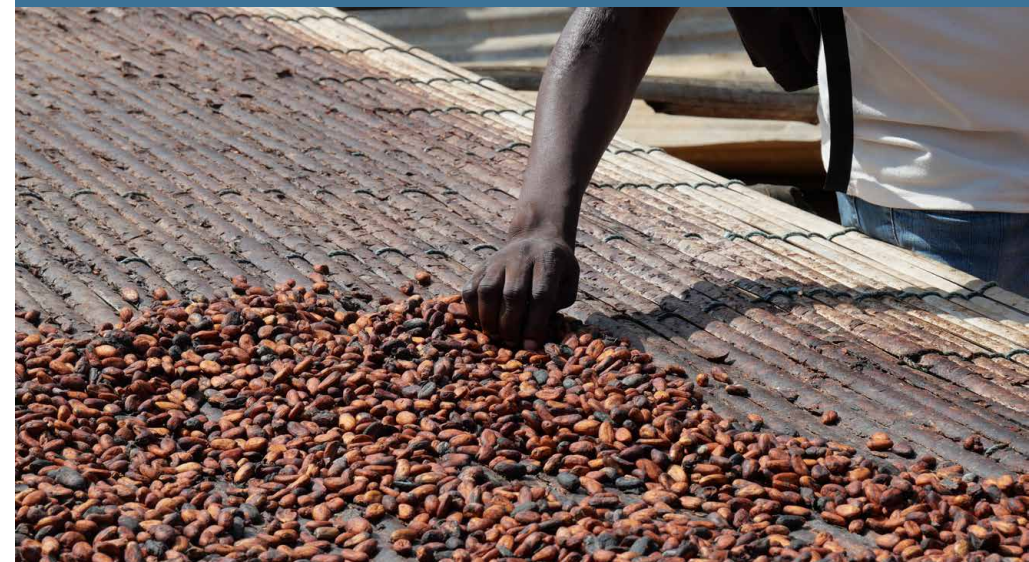
MOOSHEW

Support for public policies and businesses in the African cashew sector for a sustainable, resilient and efficient value chain. Nitidæ has been mandated by the European Union to support any African cashew-producing country that wishes to improve its regulation of the sector. These interventions are mainly carried out by the Markets & Sectors cluster and draw on the expertise of the Agroecological Transitions and Lab clusters.

To date, Nitidæ teams have provided support to the governments of Ivory Coast and Tanzania. Senegal and other African countries have already expressed their interest and will soon receive this support.

COSTRA

Study commissioned by the European Union to assess the compliance costs for all cocoa operators in Ivory Coast under the EU Imported Deforestation Regulation (EUIRD), using a methodology that involved consulting direct and indirect operators, both national and international, in the cocoa value chain, analysing existing traceability and the required functionalities. The study was accompanied by recommendations on the accompanying measures to be put in place..



RICOCA

Support for the **Ksapa** company, whose project is to set up innovative financing solutions for cooperatives in **Ivory Coast**, so that they can strengthen themselves by developing or diversifying their activities. With particular focus on the **cocoa** sector, a series of the most relevant levers were analysed from an operational and financial perspective, as well as in terms of their environmental and social impacts.

MURI

In the **ylang-ylang** sector in **the Comoros**, assessment of a private company's supplier according to the latter's CSR grid, accompanied by a decent income study using the Anker methodology ("Living Wage/Income"). The aim of this study was to estimate the price of the raw material that would enable upstream players in the sector (producers, harvesters, distillers and their labourers) to achieve a basic and decent standard of living (while covering the costs of sustainable production). A roadmap for meeting CSR requirements and moving towards this decent income has been drafted in consultation with stakeholders, and Nitidæ is now supporting the supplier in its implementation.

TRUST

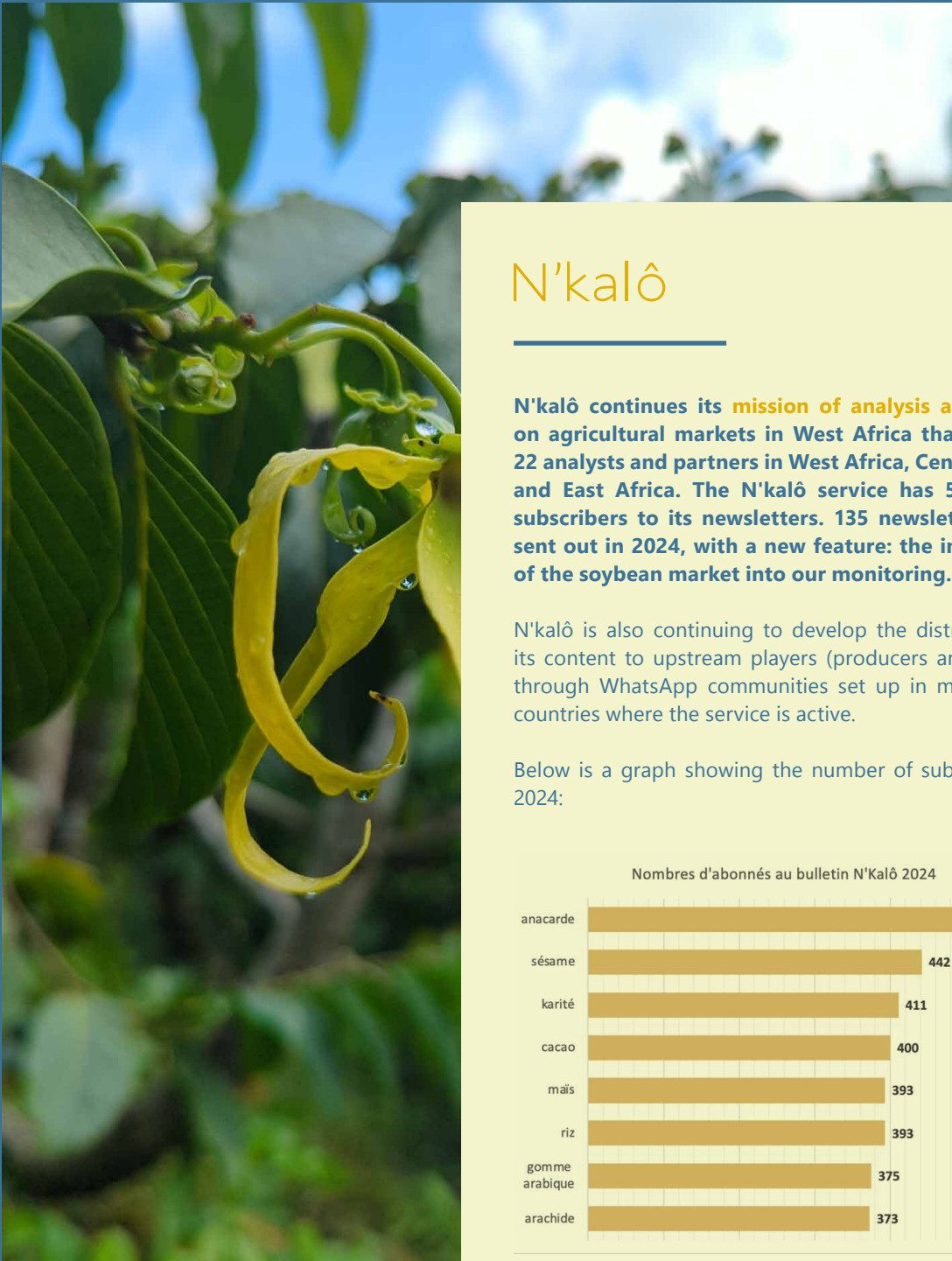
Analysis of the **cashew nut** sector in **Sierra Leone** to support a programme of assistance and sustainability led by a consortium including the Dutch NGO Woord en Daad, the trader Cocoasource, and its local partner Akuna Cocoa. The aim of this action was to improve understanding of the dynamics and challenges of the sector, particularly in relation to cross-border trade with Guinea, to advise the TRUST programme on the implementation of relevant activities.

MASSELEC

Analysis of the availability of forest, agricultural and agro-industrial residual **biomass** (i.e. waste or by-products available at the level of each actor in these sectors) in **Côte d'Ivoire, Togo** and **Benin**, to assess the feasibility of implementing power plants. In addition to Nitidæ's expertise in analysing and structuring agricultural and agro-industrial sectors, this study was carried out jointly with colleagues from the Energy division, and the Lab was also called upon for its cartographic skills.

CUNIBUR

Study commissioned by IFAD's Agricultural Risk Management Platform (PARM) to assess the agricultural risks of the **rice, maize** and **rabbit** sectors in **Burundi**, according to their own methodology, and thus help decision-makers understand the risk profile and propose appropriate management tools for sustainable development policies, institutional capacities and investments.

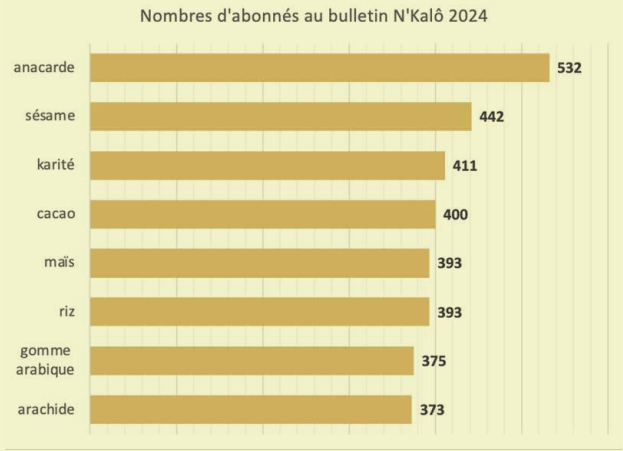


N'kalô

N'kalô continues its mission of analysis and advice on agricultural markets in West Africa thanks to its 22 analysts and partners in West Africa, Central Africa and East Africa. The N'kalô service has 546 active subscribers to its newsletters. 135 newsletters were sent out in 2024, with a new feature: the integration of the soybean market into our monitoring.

N'kalô is also continuing to develop the distribution of its content to upstream players (producers and traders) through WhatsApp communities set up in most of the countries where the service is active.

Below is a graph showing the number of subscribers in 2024:





Agro-ecological transitions

The agroecology division supports transitions in agricultural practices and systems, drawing on its in-depth knowledge of agricultural dynamics and land use. Our expertise is based on an understanding of agroecological transitions and an approach that combines environmental sustainability, social inclusion and the economic performance of agricultural systems. In short, it is about answering the question: how can we produce better, together and more sustainably? The division designs tailored technical support, ensures the operational deployment of accompanying measures and structures planning and monitoring tools. We mobilise this expertise to serve Nitidæ's project teams and other technical divisions, as well as in the context of service provision.

areas of expertise

The agroecology division brings together a team of agronomists with complementary specialities. Their expertise covers agroecology, agricultural consulting, agricultural diagnostics, farmer experimentation, soil fertility and agroforestry systems. The division works in synergy with Nitidæ's other technical divisions – Supply Chains and Markets, Bioenergy and Lab' – to develop integrated approaches rooted in local areas, with a view to achieving a contextualised and coherent agroecological transition.

The cluster supports projects at every stage: it is involved in the design of support measures, their implementation in the field, and their monitoring and adjustment, while validating the technical levers selected. Working closely with project teams and technicians, the hub helps to produce the tools needed for operational management, including technical data sheets for support measures, annual work plans (AWPs), activity schedules, intervention organigrams, provisional budgets and monitoring and evaluation mechanisms. These tools enable clear planning, effective distribution of roles and consistent implementation of agricultural support in the field.

2024 was a busy and stimulating year for the agroecology division. Supported by a rapidly expanding team, the division mobilised its expertise on a variety of projects, led by a wide range of partners – from public donors to private actors – and on a variety of themes ranging from field work to technical advocacy. A few concrete examples below illustrate the diversity of our projects, from the mangroves of Madagascar to the forests of Uganda:

Examples of studies conducted by the cluster in 2024:

SUSVAN

Support for the agricultural advisory service (support for diversification, training) for vanilla producers in **Madagascar** on behalf of Symrise, through long-term technical assistance.

FAIRSAHEL

Evaluation of an agroecological intensification project coordinated by CIRAD and implemented by a consortium of 13 research and development partners in three countries: **Burkina Faso, Mali** and **Senegal**.

Examples of projects supported by the cluster in 2024:

TERROIRS in Burkina Faso

Integrated territorial approach in the rural communes of Sanguié and Boulkiemdé, with support for resource management in areas surrounding protected areas such as the Lati Forest and the promotion of sustainable industries, particularly shea butter.

COCOA4FUTURE, TERRI4SOL, PRM2 et REZOBIO in Ivory Coast

Transition of cocoa production systems, preservation of protected and forest areas while enabling sustainable socio-economic development in the Mé and Haut-Sassandra regions.

TALAKY BE in Madagascar

Contributing to the preservation of natural forest ecosystems and improving the living conditions of the populations living near these forests in the Anosy region.

ACAMAZ 2 in Mozambique

Contribute to improving the competitiveness of the cashew and macadamia value chain, specifically in the areas surrounding Gile National Park and the Mount Namuli Community Nature Reserve.

FILTEA et IRTHE in Uganda

Support for agricultural practices that preserve biodiversity in Kibale National Park.

SOIGNON in Senegal

Establishment of a network of onion producers.



areas of expertise

Throughout 2024, the N'Lab team continued to conduct research, provide technical support for Nitidæ projects, and carry out ad hoc studies.

Some examples of activities carried out by the division in 2024:

■ The **Anagroclim** project in Ivory Coast has made great progress. An extensive field campaign (nearly **25,000 observations** on cashew orchards, scheduled for completion in 2025) is providing unprecedented data for the **Cotton and Cashew Council** (CCA), enabling better characterisation of orchards. At the same time, an **agroclimatic forecasting model** has been developed: based on temperature and rainfall from July to November, it anticipates cashew nut production before the fruit appears. This strategic tool helps the CCA to **plan the marketing campaign** and optimise the **logistics and organisation** of the harvest.

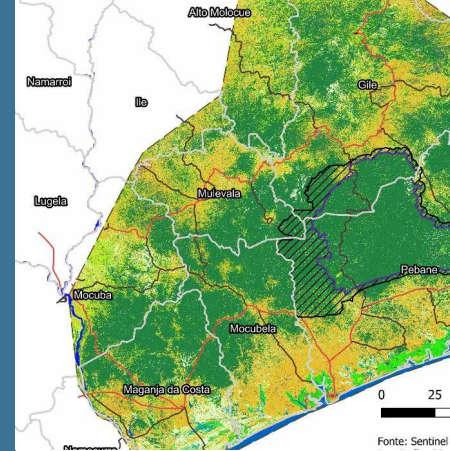
■ **Change of scale for the SAFART reference framework.** N'Lab has contributed to improving the scientific basis of the SAFART reference framework. This reference framework for agronomic practices aims to promote and encourage agroforestry practices in cocoa production through payments for environmental services (PES) made to producers. During the year, the team worked on a data collection protocol that is simple to deploy in the field and scientifically robust, based on various indicators including basal area, specific richness and shade tree density. This reference framework is currently being rolled out to private actors in the sector..

- Launch of a new joint PhD project with AgroParisTech, focusing on understanding the effects of the "carbon" dimension on regional projects, particularly their agricultural component, and the resulting impacts on agricultural trajectories. The study will be based on fieldwork and a comparative analysis of two projects carried out in Côte d'Ivoire, where deforestation rates, due in part to cocoa cultivation, are particularly high.

■ Scientific communications and participation in international conferences. In Kigali (ATBC), **Claire Auger** presented her thesis work on promoting biodiversity-friendly agricultural practices through the Elephant Friendly and Chimpanzee Friendly labels in Uganda. In Lisbon (European Conference on Tropical Ecology), **Sá Nogueira Lisboa** presented her research on mapping and analysing factors of forest change in the Miombo forests of Mozambique.

- Publication of scientific article.

A study on understanding the factors of deforestation and forest degradation in the Miombo landscape in Mozambique has been published in the International Journal of Applied Earth Observations and Geoinformation. This study contributes to Sá Nogueira LIS-BOA's thesis and proposes a new approach to quantifying and locating the factors of land degradation and restoration. The approach is intended to be transferable to other territories or areas of intervention, in particular for territorial diagnostics with the agro team.



Nitidæ Lab

Nitidæ Lab (n'Lab) is the association's spatial and environmental analysis laboratory. It brings together Nitidæ's technical and scientific expertise in remote sensing, spatial modelling and geographic information systems (GIS) applied to agricultural sciences, climate sciences and forest ecology. Through its Lab, Nitidæ has set itself the mission of monitoring, analysing and modelling territorial dynamics to improve the management of development projects and assess their socio-economic and environmental impacts.

The logo for n'lab, featuring the text "n'lab" in a dark blue font, with a stylized green fingerprint graphic above the letters "lab".

The n'Lab currently consists of a dozen researchers and design engineers based in France (Maison de la Télédétection in Montpellier), Antananarivo, Maputo and Abidjan, who collaborate with international agricultural research institutes (IRD, CIRAD, INRAE, MNHN, etc.) and universities (AgroParisTech, Gembloux, Eduardo Mondlane, Univ. Antananarivo, Univ Houphouët-Boigny, etc.).

In summary, researchers in this Research & Development department Development department **1)** conduct research projects through doctoral or post-doctoral theses, **2)** produce spatial or field data and tools to support Nitidæ projects, and **3)** carry out ad hoc studies for clients in collaboration with other divisions (Markets and Sectors, Agroecological Transitions, Energy).



Energy and Infrastructure

The Energy and Infrastructure division brings together a team of engineers with diverse skills in energy, mechanics, agri-food processes and sanitation. It participates in Nitidæ's activities, supporting various initiatives:

- Projects focused on bioenergy for populations with limited access to modern forms of energy and for economic actors wishing to increase the added value associated with the local processing of raw materials (e.g. the Biostar project and our Agrovalor platform).
- Through landscape projects, nitidæ carries out multidisciplinary and in-depth work, most often in areas of high environmental value in Africa (e.g. the PAPBio Comoé project). The Energy and Infrastructure Division plays a key role in providing appropriate solutions for the development of new activities, the creation of basic community infrastructure and the launch of virtuous initiatives (energy efficiency, recycling/resource circularity, wood energy, etc.).

The team's expertise is also showcased through studies, most often with a sector-based approach (e.g. **CHAUFFETEIN**).

areas of expertise

The year 2024 saw the completion of several key initiatives/actions, carried out in synergy with other divisions:

- The **SHEA GETS GREENER** (SGG) shea sector project ended with very satisfactory results: four cooperatives of organic shea collectors were created and equipped with collective facilities for processing nuts. We have also been a driving force for innovation in artisanal butter processing, proving that it is possible to combine efficient, low-mechanisation processes suitable for small women's organisations with the very laborious process of manual churning.
- The **BioStar** project reached a key milestone with the transition to the concrete implementation of bioenergy solutions. Nitidæ played a central role in the operationalisation: supervision of infrastructure (building, electricity, plumbing), installation of equipment (boilers, dryers, roasters) and training of operators in pilot SMEs. The pla-

■ The experimental platform in Bobo-Dioulasso has become a major centre for experimentation, while the team has strengthened coordination with the cashew, mango and shea sectors.

■ Following the completion of a first power plant using cashew nutshell gasification in Benin in 2023, the **Agrogazelec** project led to a second installation in Senegal for the recovery of rice husks in an industrial husking unit.

■ Energy/process expertise is also deployed across Nitidæ's major landscaping and sector projects. On **WAKANDA** and Terroirs in Burkina Faso, our involvement in agricultural development projects is increasingly leading us to take on the role of project owner or site manager: water drilling, development of market gardening sites, design and construction of community activity centres.

In addition to these projects, the Energy team worked on a dozen other projects in 2024. In Yamoussoukro, the PYROCITA project installed a pyrolysis boiler and a carbonisation platform capable of processing up to 4 tonnes of cashew shells per day. The team was also involved in biochar, with trials of coconut and palm kernel shell carbonisation (CARBOCOPA project) in partnership with FiBL and Ivorian stakeholders, opening up a new collaboration between Burkina Faso and Côte d'Ivoire. At the same time, industrial consulting services were provided in Burkina Faso (CABES, Gebana) and Senegal to optimise the energy use of cashew shells and develop their market as a fuel. Finally, in Senegal, a study explored the use of peanut shells in gasification for electricity and biochar, with trials carried out on the Bobo-Dioulasso platform.

The team was mobilised on key studies for Côte d'Ivoire aimed at identifying the most relevant deposits for operators seeking to generate electricity (**MASSELEC**) or biofuels (**CARBURIB**).



burkina faso



Key figures

- 30 employees
- 3 offices : Ouagadougou, Koudougou, Bobo Dioulasso
- 5 projects in progress
- Amounts committed in 2024 : **€2.36 million**

Map © FreeVectorMaps.com



In 2024, in a context still marked by high security tensions, Nitidæ continued its commitment in Burkina Faso, confirming the country's strategic position in the organisation's overall dynamic. In 2024, Nitidæ's budget in Burkina Faso amounted to €2.36 million, or 28% of the association's budget, compared to €2 million in 2023.

The year was marked by the roll-out of activities in the provinces of Sanguié and Boulkiemdé (Central-West region), providing Nitidæ with a stable foothold in a new area of intervention relatively untouched by armed conflict. This was achieved while continuing its intervention in the PONASI landscape (Central-South region). The various projects continue to strengthen our expertise in sustainable rural development, agroecology and land governance.

In addition, significant work has been carried out internally to strengthen the foundations of our presence in the country. The team has further developed the projects launched in 2023, with notable progress in governance, optimisation of administrative and financial procedures, structuring of experience capitalisation and intensification of communication on actions and their impacts.

Ponasi 2

Regions of intervention

Protected areas of the PONASI complex

Support the protection/improvement of the natural capital of the PONASI forest complex and increase the resilience of local communities.

Partners

EU - European Union · NATURA - Friends of Nature Foundation · Conservation Justice · AGN - Les Anges Gardiens de la Nature · FFEM - French Global Environment Facility

■ [Find out more](#)

Land at Scale

Regions of intervention

Protected areas of the PONASI complex

This project aims to improve food security and resilience for women and young people in the country by securing their access to land and strengthening governance and land management practices.

Partners

Netherlands Enterprise Agency · Oxfam Burkina Faso · National Land Observatory of Burkina Faso - ONF

■ [Find out more](#)

Wakanda

Regions of intervention

Protected areas of the PONASI complex

Improve the living conditions of the populations living near the PONASI forest complex and, more generally, strengthen the resilience of the territory, particularly in the face of climate change.

Partners

NATURAMA - Friends of Nature Foundation · CERDE - Centre for Environmental Law Studies and Research · EU - European Union · FFEM - French Global Environment Facility

■ [Find out more](#)

Terroirs

Regions of intervention

Sanguié and Boulkiemdé provinces

Contribute to strengthening the resilience of populations in the provinces of Sanguié and Boulkiemdé affected by the security crisis.

Partners

INADES · CERDE - Centre for Environmental Law Studies and Research · APAD Sanguié · EU - European Union

■ [Find out more](#)

In 2024, the Nitidæ office in Ivory Coast was able to consolidate its expertise and projects in the cocoa sector. A study on the costs of traceability in relation to the EU Voluntary Global Standard was conducted for the EU, and the new Payments for Environmental Services in Cocoa Plantations project, funded by Belgian Cooperation (ENABEL), was launched. The office also continued to develop its expertise and projects in the cashew sector, around the Comoé National Park, and in partnership with the Cotton and Cashew Council. We were also able to take stock of our interventions in the shea sector in Ferkessedougou and Dabakala. In the energy sector, we finally conducted several studies on the availability of agricultural biomass for use in energy and other products, which is now a strategic issue in the country. In 2024, Nitidæ Côte d'Ivoire's budget amounts to €2.09 million, or 25% of the association's budget, compared to €2.62 million in 2023.

PRM2

Region of intervention
Mé region

Contribute to landscape resilience through coordinated natural resource management and the promotion of zero-deforestation agriculture across the territories. The project contributes to improving the living conditions of the populations, protecting the Mabi-Yaya forest massif and strengthening the resilience of the Mé and Bété territories in the face of climate change.

Partners

FFEM - French Global Environment Facility AFD - French Deve-

lopment Agency Union - European GiZ Ivorian Office for Parks and Reserves (OIPR) · Regional Council of Mé

■ [Find out more](#)

PAPBio Comoé 2 and MOOSHEW

Region of intervention
Hambol and Tchologo

Promote endogenous, inclusive and sustainable economic development in the areas surrounding Comoé National Park, mainly Mont-Tingui: development and implementation of Local Development Plans, development of Income-Generating Activities (IGAs), agricultural support, support for the cashew and shea sectors, etc.

Partners

GiZ AFD- French Development Agency · Tchologo Regional Council Hambol Regional Council, Ministry of Economy, Planning and Development OPEN-CI

■ [Find out more](#)

Cocoa 4Future (C4F)

Region of intervention
Mé region

Cocoa4future is a project developed by CIRAD, which wanted to involve Nitidæ in its implementation in Côte d'Ivoire. It aims to improve implementation of certain activities the sustainability of cocoa farms while preserving the environment (limiting deforestation and restoring forest cover) by

adapting cocoa farming systems to changing conditions in Côte d'Ivoire and Ghana.

Partners

EU - European Union AFD French Development Agency · CIRAD · APDRA · Nangui Abroguia University, UFHB

■ [Find out more](#)

Terri4Sol (T4S)

Region of intervention
Mé region

The project was developed to complement the Co-coa4Future project and aims to work on low-carbon rural development scenarios. The idea is to co-develop low-carbon development scenarios with the beneficiary communities, implement them and then assess their climatic and socio-economic impacts.

Partners

CIRAD · FFEM - French Global Environment Facility

■ [Find out more](#)

PSENABEL

Region of intervention
Nawa and Indénié-Djuablin

Develop viable economic models for Payments for Environmental Services linked to cocoa landscapes for the sector in Côte d'Ivoire. Enlist cooperatives in partnerships with the private sector by offering them payments for environmental services.

Partners

ENABEL, Ocean CocoaSource, ECOM ZAMACOM ECAM cooperatives, SCANIAS, FAHO

ANAGROCLIM

Region of intervention
Cashew nut producing regions

As part of its objective to develop the cashew sector, the Cotton and Cashew Council of Côte d'Ivoire wishes to develop tools to better control cashew production through a better understanding of the factors that influence cashew tree yield, particularly by understanding its sensitivity to soil and climate factors. Improving knowledge of Ivorian orchards and developing a methodology for agroclimatic forecasting of cashew production in Côte d'Ivoire.

Partners

Cotton and Cashew Council NGO Chigata

■ [Find out more](#)

CRODA

Region of intervention
Mé, Daloa and Dibobly

Co-develop and test technical pathways for the sustainability of Ivorian cocoa farms: Trials and training for the adoption of bio-pesticides, biofungicides, biofertilisers and techniques for pruning and rehabilitating old orchards.

Partners

CRODA Foundation

ivory coast



Key figures

- **42** employees
- **3** offices : Abidjan, Adzope, Dabakala
- **9** projects and several studies and technical assistance missions currently underway
- Amounts committed in 2024 : **€2.09 million**

madagascar



Key figures

■ 96 employees

■ 3 offices :
Antananarivo, Ambilobe, Tolagnaro

■ 6 projects in progress

■ Amounts committed in 2024 : **€1.16 million**

Map © FreeVectorMaps.com

The year 2024 marks the effective launch of the Talaky Be – Lot 1 project, dedicated to adapting agriculture and strengthening the resilience of rural communities in the Anosy region. This launch was accompanied by a strengthening of the operational team in Fort-Dauphin, with the arrival of new technical profiles to structure the first interventions in the nine targeted municipalities. At the same time, conservation efforts continued in the Beampingaratsy massif, with the ongoing implementation of the project supported by Rainforest Trust, aimed at obtaining official recognition of the site as a national protected area. This process, initiated under the previous Talaky project, is part of a long-term strategy to preserve the ecological corridors in the south-east.

In Basse Mahavavy, the cashew nut project was completed in May 2024. The intervention focused on the technical and commercial structuring of the cashew nut sector, with an emphasis on improving productivity, artisanal processing and market access. This support helped to consolidate the economic capacities of producers and increase local incomes.

Finally, the pilot phase of the partnership with Rio Tinto on reforestation covered more than 700 hectares in six months. This progress, achieved in a context marked by technical, climatic and budgetary constraints, confirms the feasibility of larger-scale deployment. It also highlights the strength of community partnerships established around agroforestry approaches and adapted technical itineraries.

In 2024, Nitidæ Madagascar's



budget will be €1.16 million, or 14% of the association's budget, compared to €0.69 million in 2023.

Talaky

Region of intervention

Anosy region

- Strengthen conservation activities by continuing the process of creating the Beampingaratsy New Protected Area (NPA)
- Develop sustainable alternatives to the exploitation of forest resources to meet the needs of local populations
- Strengthen the position of local authorities as key players in land use management.

Partners

AFD - Agence Française de Développement (French Development Agency) - Anosy Regional Council - Ministries and Decentralised Services (DREDD, DGATH), PIC, Sahanalà

■ [Find out more](#)

BNPA

Region of intervention

Anosy region

This project, to be carried out with Rainforest Trust, is a continuation of Talaky, with a focus on protecting biodiversity through the permanent protection of Beampingaratsy under protected area status.

Partners

Rainforest Trust · AFD - Agence Française de Développement

■ [Find out more](#)

RTNS

Région d'intervention

Anosy region

Create sustainable carbon sinks that are accepted by communities through collaboration between Rio Tinto and Nitidæ in the four municipalities covered by the project: Mahatalaky, laboakoho, Manantenina and Ampasimena on the right bank of Manampanihy.

Partners

Rio Tinto Natural Solutions

Madanaca

Regions of intervention

Ambilobe District, DIANA region

Improve the productivity and profitability of the cashew value chain through capacity building, stakeholder collaboration and plantation renewal, thereby increasing the incomes of the households involved.

Partners

GIZ · Ministry of Environment, Ecology and Forests (Madagascar) · Ministry of Agriculture, Livestock and Fisheries (Madagascar)

■ [Find out more](#)

The year 2024 marked a turning point in our presence in Mozambique with the simultaneous launch of phase 2 of two major projects: ACAMAZ (support for the cashew and macadamia sector) and NAMULI (project for the conservation and sustainable development of natural resources around Mount Namuli). In line with this momentum, a new land demarcation project was launched in 2024, with the opening of a new office in Pebane, thereby consolidating our presence in the province of Zambézia. In addition, Nitidæ continued its technical advisory activities in the cashew sector, notably with targeted support actions for producers around Banhine National Park.

The last quarter of the year saw a more sensitive institutional and operational context, with some instability due to the presidential elections potentially affecting the pace of implementation of certain projects.

In 2024, Nitidæ's budget in Mozambique amounts to €1.01 million, or 12% of the association's budget, compared to €1.15 million in 2023.

Acamoz 2

Support for cashew and macadamia CDVs and macadamia CDVs in Mozambique

Regions of intervention

Maputo, Zambézia Province (Gilé, Pebane and Gurué districts), Nampula and Niassa

The ACAMAZ 2 project contributes to improving the competitiveness of the cashew and macadamia value chains (following an initial phase completed in 2023).

The objectives are as follows:

- Inform sectoral policies and innovative production, processing and marketing models. Promote agroecological production systems for cashew nuts and macadamia nuts that are zero deforestation and adapted to climate change
- Strengthen sustainable natural resource management in the buffer zone of Gilé National Park
- Promote the integration of macadamia into agroforestry coffee systems (Montes Namuli, Gurué)

Partners

AFD - Agence Française de Développement IAM, IP Mozambique Almond Institute; Ministry of Environment, Agriculture and Fisheries, Gilé National Park

Find out more

Namuli 2

Region of intervention

Mont Namuli (District de Gurué, Province de Zambézia)

Promote the creation of a new protected area by establishing a sustainable agricultural development model in the Namuli region to ensure the resilience of family farming and food security in the face of climate change.

Partners

Liechtensteinischer Entwicklungsdienst - LED, Linsi Foundation, Observatório pelo Meio Rural

Find out more

PETER

Region of intervention

Pebane (Zambézia Province)



- Promote the creation of registered community associations for land and natural resource management.

- Map and register communal, family, collective and individual land use rights for 20 communities in the coastal area of Pebane District

• Eduardo Mondlane University - UEM · National Agency for Conservation Areas (ANAC) of Mozambique

Find out more

BANICA

Region of intervention

Banhine National Park (Gaza Province)

Advise and provide technical assistance to the community department of Banhine National Park on the implementation of a sustainable programme to plant 10,000 cashew trees in communities located around the park.

Partners

Peace Parks Foundation · Perma-nuts (ex-Condor)

Find out more

mozambique



Key figures

■ 49 employees

■ 4 offices : Maputo, Gilé, Gurué, Pebane

■ 6 projects in progress

■ Amounts committed in 2024 : €1.01 million

senegal



Key figures

- 9 employees
- 5 projects in progress
- Amounts committed in 2024 : **€459,000**

Map © FreeVectorMaps.com

Although Senegal continues to represent a low volume of business for Nitidæ (€299K in 2023, or 4% of the budget), 2024 was marked by growth in absolute terms and, above all, diversification of projects/services. Turnover in 2024 is €492K, an increase of around 39% compared to 2023. It represents 6% of the association's budget. This gradual increase in business volume has led to an increase in the size of the team (from 3 in 2023 to 9 employees in 2024) in our Kaolack office.

Following the end of PROPAC in March 2024, our sector expertise has been consolidated in the Sine Saloum region with the launch of two projects on agricultural trade intermediation financed by the EU through ENABEL as part of the Gungue Mbay programme.

The promotion of the association's expertise in supporting the development of cashew processing in Senegal was also a highlight in 2024. Through the PADI-Cashew project, our technical expertise was made available to cashew manufacturers for tailor-made services adapted to their needs in order to make them more competitive. One of the most important results was the support for the development of an advocacy document that should, in the short to medium term, encourage state authorities to take measures in favour of cashew processing.

As part of the TEFESS project, Nitidæ supported the NE-BEDAY association in conducting a carbon assessment of the project and a market study on the coconut, dikh and palm tree sectors.

In terms of skills diversification, the establishment of the agroecology cluster is to be commended, as it has contributed to

the development of several proposals that should enable at least one funding opportunity to be secured in 2025.

Propac

Region of intervention
Sine Saloum

Promote models of professional agricultural organisations for fairer marketing and a resilient agricultural sector conducive to the emergence and development of an inclusive and sustainable agri-food sector in Sine Saloum.

Partners

Solidagro · 3AP · Belgian Development Agency (CTB-ENA-BEL) · Broederlijk Delen

■ [Find out more](#)

Tefess

Region of intervention
Sine Saloum

Project carried out in partnership with the Senegalese NGO Nebeday (lead), which aims to sustainably increase the resilience and adaptation of communities in Sine Saloum to the context of ecological vulnerability. Nitidæ supports NENEDAY in conducting sector studies, assessing the project's carbon footprint, and structuring beneficiary organisations.

Partners

Nébédjay

■ [Find out more](#)



Anarise

Region of intervention
Sine Saloum

Support for the development of industrialisation in the cashew nut sector as part of the special initiative for employment and SME development in Senegal. The aim is to meet the demand from manufacturers for expertise in all areas related to the development of processing companies.

Partners

Agriculture and Finance Consultants (AFC) · GIZ · Federal Ministry for Economic Cooperation and Development (BMZ)

■ [Find out more](#)

Income

Region of intervention
Sine Saloum

The main objective of this service is to set up, deploy and support the implementation of individual commercial intermediation services tailored to the context and needs of stakeholders in the priority value chains of the central agropolis. This service should facilitate the establishment of around 200 sustainable, win-win business relationships with a total cumulative value of €6 million during the 2023/24 and 2024/25 campaigns.

Partners

Belgian Development Agency (CTB-ENABEL) · EU - European Union · Senegal National Fund for Agro-Sylvo-Pastoral Development - FNDASP

■ [Find out more](#)

SYSEN

Region of intervention
Sine Saloum

Establish and deploy a pool of expertise in commercial intermediation services for actors in the value chains of the central agropolis.

Partners

Belgian Development Agency (CTB-ENABEL) · EU - European Union · Senegal National Fund for Agro-Forestry-Pastoral Development - FNDASP

■ [Find out more](#)

In 2024, Nitidæ strengthened its presence in Central Africa with the official opening of its representative office in Cameroon in November, as part of the contract signed with the European Forest Institute (EFI) for the implementation of the municipal planning component of component 3 of the Natura Sud Est project.

This initiative builds on the organisation's existing presence in the country through the TRADEF project, also funded by EFI, which has developed expertise in sustainable cocoa, natural resource governance and the fight against illegal exploitation. Building on these achievements, Nitidæ is preparing for a change of scale in 2025 thanks to new funding from GIZ as part of the SAFE project, which will strengthen the actions already underway and expand the areas and themes of intervention.

The year 2024 was therefore one of structuring and institutionally establishing Nitidæ in Cameroon, in a context marked by contrasting security, economic and environmental challenges. The opening of the office made it possible to consolidate technical and financial partnerships, support local authorities in municipal planning and capitalise on the experience gained in the regions already covered by the TRADEF project.

Significant work has also been carried out internally to lay solid foundations: administrative and financial procedures have been put in place, the first employees have been recruited, strategic priorities have been defined and communication on ongoing actions has been stepped up.



Nartura Sud Est

Region of intervention
South and East

Ensuring sustainable development in two forests of global importance in southern and south-eastern Cameroon by guaranteeing inclusive growth and responsible use of natural resources through three components:

- Strengthen inclusive landscape biodiversity conservation by local authorities
- Increasing the livelihoods and resilience of local communities through green economy sectors
- Improve governance of territories and natural resources by centralised actors

Partners
EU - European Union · EFI

[Find out more](#)

Galileo

Region of intervention
Centre, Littoral

Find innovations that enable cocoa farmers to cope with climate change. Implement these innovations in living laboratories. Living labs are open innovation ecosystems in real environments, based on a systematic approach to co-creation with users that integrates research and innovation activities into communities and/or multi-stakeholder environments, placing citizens and/or end users at the centre of the innovation process.

Partners
EU - European Union

[Find out more](#)

Safe

Region of intervention
Centre, South, East, West, Littoral

As part of the project to scale up the open source traceability solution INA Trace for cocoa and coffee operators in Cameroon, IT Technical Assistants (AT) are being recruited. The missions and skills are detailed below. This project, codenamed "TRADEF Scale-Up", aims to strengthen compliance with the European Union Deforestation Regulation (EUDR) and improve knowledge of traceability solutions. The technical assistants will report to the Junior Supply Chain & Agronomy Expert and the Senior Supply Chain & Traceability Expert.

Partners
GIZ · Federal Ministry for Economic Cooperation and Development - BMZ

cameroon



Key figures

- First team in place : **3** employees
- **Opening** of the national office in Yaoundé (November 2024)
- **2** projects in progress (TRADEF and Natura Sud Est)
- Budget committed: approximately **€28,000**

financial report

After several years of growth, 2024 marks a period of stabilisation in activity. The total budget amounts to **€8,322,254**, up 3% on 2023, with a net profit of €146,986. This surplus will strengthen the association's reserves.

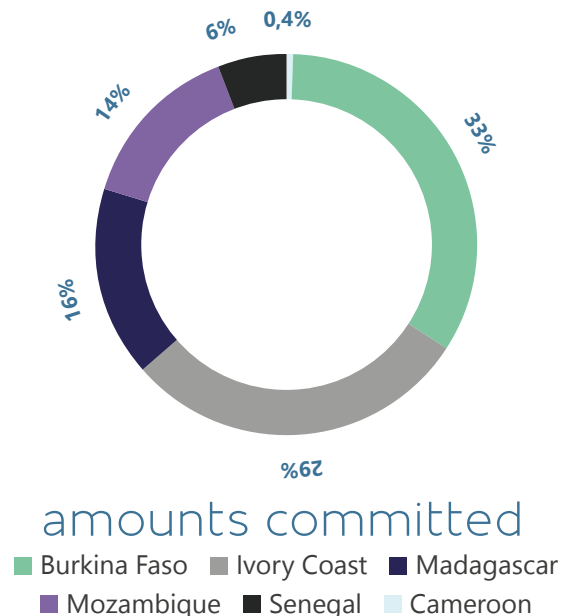
Furthermore, 89% of expenditure was devoted to field operations, illustrating Nitidæ's ongoing commitment to implementing its missions, despite a significant increase in human resources to support the increase in operational volume.

Activities by country

While Ivory Coast – the leading country of intervention in 2023 – reduced its activities in 2024 (volume effect linked to lower subsidy expenditure), projects in Burkina Faso entered their "run" phase, which made it possible to maintain a high level of activity. In Mozambique, despite a turbulent context in 2024, activity remained stable, notably due to the launch of a new project in the Namuli area.

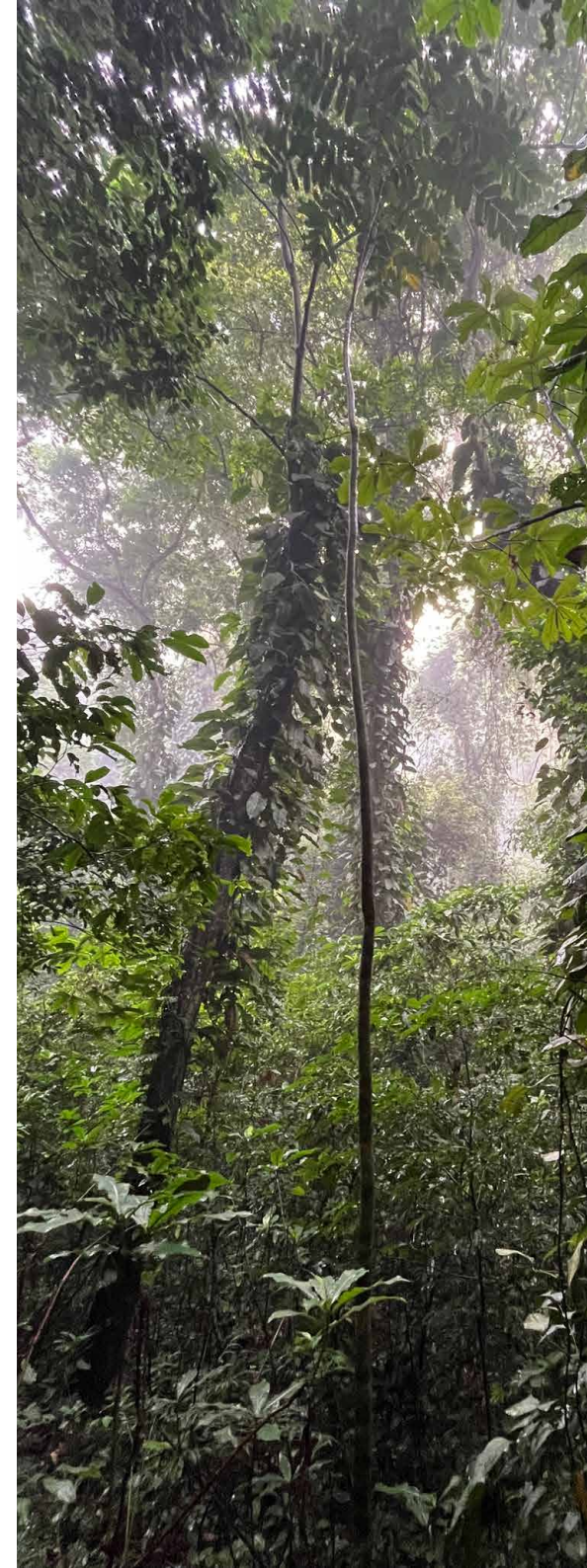
Madagascar has regained a significant volume of activity thanks to the roll-out of the Talak Be project; Senegal has also significantly increased its volume of activity, although it remains below that of the other countries where the programme is implemented.

Several countries have also joined Nitidæ's sphere of intervention in 2024: Cameroon, where an official representative office was opened, launched the NATURA SUD EST project. Other projects, notably those financed by GIZ, will be launched in 2025. Uganda, which until now has been managed remotely, will see its activities consolidated with the opening of a country office by 2026, particularly in the context of the SATAF project. The same applies to Tanzania.



Resources by Types of clients/funders

Public donors (EU, AFD, GIZ, ENABEL) account for a very large proportion of our resources (73% in 2024, same as in 2023) and this is not expected to change in the short term. Companies account for 20% of our budget, mainly in the form of services, which is still a significant amount in absolute terms (€1.7 million).



balance sheet

	Net at 31/12/2024	Net at 31/12/2023
BALANCE SHEET ASSETS		
FIXED ASSETS	538,230	354,508
CURRENT ASSETS	23,426,878	18,557,032
Receivables	19,464,465	14,510,774
Cash	3,938,582	4,033,495
Prepaid expenses	23,831	12,763
GRAND TOTAL	23,965,108	18,911,540
LIABILITIES		
ASSOCIATION FUNDS	856,298	709,312
Equity	709,312	681,644
Profit for the financial year	146,986	27,668
PROVISIONS AND DEDICATED FUNDS	0	0
DEBTS	23,108,810	18,202,229
Other liabilities	921,589	821,964
Deferred income	22,187,221	17,380,265
GRAND TOTAL	23,965,108	18,911,540

income statement

	as at 31/12/2024 8 243 786	as at 31/12/2023 8 023 838
OPERATING INCOME		
Contributions	600	1,020
Sales of assets	26,574	29,695
Sales of services	2,597,712	1,975,867
Public grants and operating subsidies	1,254,406	855,106
<i>Sponsorships</i>		3,387
Financial contributions	4,362,591	5,070,349
Reversals of depreciation, impairment, provisions and transfers of expenses	18	87,964
Other income	1,884	450
FINANCIAL INCOME	28,218	14,751
EXCEPTIONAL INCOME	49,251	7434
TOTAL REVENUE	8,322,254	8,046,023
OPERATING EXPENSES	8,197,455	8,046,337
Purchases of goods	5,891	19,095
Other purchases and external expenses	2,638,208	3,597,150
Financial assistance	1,294,890	906,260
Taxes, duties and similar payments	181,423	198,080
Salaries and wages	2,802,410	2,439,336
Social security contributions	937,363	722,763
Depreciation and amortisation	326,474	153,777
Other expenses	10,796	28,970
FINANCIAL EXPENSES	39,874	28,093
EXCEPTIONAL EXPENSES	44,479	16,085
INCOME TAX	-106,539	-72,159
TOTAL EXPENSES	8,175,269	8,018,355
SURPLUS	146,986	27,668

governance

Nitidæ Board of Directors 2024

Executive Committee

Denis LOYER – Chairman

Retired, formerly Deputy Director of Operations then Director of the Environment and Natural Resources Department at AFD

Emmanuel GONON – Vice-Chair

Director of the European Geopolitical Observatory and Project Manager at DMI Associates

Durley MIRANDA – Treasurer

Consultant and trainer in international relations, sustainable development and CSR

Administrators

Marion BAYARD

Project Manager, DMI Associates – Lyon

Judith JACUBOWICZ

Partner & CSR Director at Strates

Michel GUGLIELMI

Professor of Agricultural Economics and Policy at ISARA-LYON (European Policies and International Trade)

Olivier LANGRAND

Executive Director of CEPF (Critical Ecosystems Partnership Fund)

Justine Humbert

Ingredients Development Manager, L'OCCITANE

Sylvie PISLAR

Territorial Engineer – Lyon Metropolitan Area

Pauline PLISSON

Director, Innovation & Technology Consulting – Naldeo Tech Technologies & Industry

Harison RANDRIARIMANANA

Retired, formerly Minister of Agriculture, Livestock and Fisheries, and Minister of Environment, Forests and Tourism in Madagascar



membership

Nous sommes membre de :

- 1% for the Planet (association approved by the collective)
- French Initiative for Sustainable Cocoa (IFCD) - NGO College
- Collective 'Rethinking Supply Chains' (Foundation for Human Progress FPH and GIZ)
- Lyon, Fair and Sustainable City
- UEBT - The Union for Ethical
- BioTrade IFOAM
- FairForLife Fair Trade France Standards
- Review Committee
- Max Havelaar France
- GTD - Desertification Working Group

Partners

Field partners

- ActiActing For Life - AFL
- Action Against Hunger -ACF
- African Cashew Alliance
- Afrik'Nature
- National Agency for Rural Promotion and Agricultural Advice - ANPROCA (Guinea)
- National Agency for Food Safety - ANSSA (Mali)
- Agramondis
- AgriMel
- Agrisud International – ASI
- Agronomists and Veterinarians Without Borders AVSF
- Guardian Angels of Nature – AGN (Burkina Faso)
- APDRA
- Ivory Coast Eco-Responsible Association - AIER
- Malagasy Association for Economic, Social and Environmental Development
- A.M.A.D.E.S.E. (Madagascar)
- Malian Association for Food Security and Sovereignty AMASSA (Mali)
- Munyu Association
- Association of Professional Farmers' Organisations - AOPP (Mali)
- Association for the Promotion of Food Security and Sovereignty in Burkina Faso - APROSSA (Burkina Faso)
- Rural Mutual Aid Association – ORAM (Mozambique)
- Somtinda Industrial Welding Workshop – ASIS

Financial partners

- AAK (Burkina Faso)
- AFRIC'IMPACT
- Rhône Méditerranée Corse Water Agency – AERMC
- French Development Agency – AFD
- National Agency for Conservation Areas – ANAC (Mozambique)
- National Agency for Research and Technology – ANRT
- Agency for Ecological Transition – ADEME
- AGRAMONDIS
- Agroforestry Technical Assistance Facility – ATAF
- Agronomists and Veterinarians Without Borders – AVSF
- ALTAI
- ALTERFIN
- EMBASSY OF THE KINGDOM OF THE NETHERLANDS
- Association for Environmental Quality Research – ARQE
- AWAY4AFRICA
- China Development Bank
- World Bank / Forest Carbon Partnership Facility - FCPF Readiness Fund
- Barry Callebaut
- Be Slavery Free
- Bioversity International
- BIRDLIFE INTERNATIONAL
- Bjorg Bonnetterre and Company
- Blue Venture Conservation (Madagascar)
- CADMUS INTERNATIONAL UK LIMITED / ARIA
- International Trade Centre - ITC
- Technical Centre for Agricultural and Rural Cooperation - CTA (Côte d'Ivoire)
- CHANEL
- COLEACP
- FAIRTRADE France
- Common Fund for Commodities - CFC
- French Committee for International Solidarity – CFSI
- Cotton and Cashew Council (Côte d'Ivoire)
- CSFD

Scientific partners

- Bissau Economics Lab - BELAB
- Centre for International Cooperation in Agricultural Research for Development - CIRAD
- Centre for Environmental Law Studies and Research - CERDE
- Climate Technology Centre & Network – CTCN
- French Scientific Committee on Desertification – CSFD

- Bioprotect
- C&E
- Cargill
- Centre for Agricultural Vocational Training – CRFPA (Madagascar)
- Albert Schweitzer Ecological Centre - CEAS (Switzerland)
- CEFREPADE
- Technical Centre for Agricultural and Rural Cooperation – CTA (Côte d'Ivoire)
- CHIGATA (Côte d'Ivoire)
- China Council for the Promotion of International Trade
- CLEXTRAL
- Fair Trade France
- Central African Forest Commission (COMIFAC)
- Farmers' Confederation of Burkina Faso (CPF)
- Cotton and Cashew Council of Côte d'Ivoire
- Tchologo Regional Council
- Conservation Justice (Burkina Faso)
- Cool Earth
- Côte d'Ivoire Energies
- CottonConnect
- Cultivating New Frontiers in Agriculture - CNFA (United States)
- Ethiquable
- Erano
- National Federation of Farmers' Organisations - FENOP
- FENPROSE
- Interprofessional Fund for Agricultural Research and Advice - FIRCA (Côte d'Ivoire)
- Funteni Installations et Conseil (Burkina Faso)
- Gaiachain (Great Britain)
- Renewable Energy, Environment and Solidarity Group – GERES
- IMF LSK (Burkina Faso)

- Delegation for External Action by Local Authorities - DAECT
- DELOITTE SENEGAL
- Department for International Development UK - DFID
- ECOOKIM (Ivory Coast)
- EDF
- EFI
- EGIS
- ELEPHANT VERT
- ENABEL
- ETG
- ETHIQUABLE
- European Forest Institute - EFI (EU)
- Expertise France
- FAO
- Fondation Ecotone
- Fondation de France
- French Fund for the Environment - Mondial - FFEM
- Interprofessional Fund for Agricultural Research and Consulting - FIRCA (Côte d'Ivoire)
- FUNDACION PACHAMAMA
- Foundation for Human Progress – FPH
- Foundation for Biodiversity Research – FRB
- International Foundation for Wildlife Management - IGF
- International Fund for Agricultural Development - IFAD
- GEBANA FASO SAS
- GFA
- Global Shea Alliance - GSA (United States)
- IED
- Montpellier National Institute of Advanced Agricultural Studies – SUPAGro
- International Fertiliser Development Centre – IFDC (United States)
- Investment and Exports Promotion Agency of Mozambique – APIEX
- KSAPA SAS
- The Pacific Community
- Legado (United States)
- LINDT & SPRUNGLI
- L'Occitane en Provence

- Scientific and Technical Committee on Forests - CST
- Rhône-Alpes Higher Institute of Agriculture - ISARA
- Research Institute for Development - IRD
- National Museum of Natural History - MNHN
- Félix Houphouët-Boigny University - CURAT Geomatics Laboratory (Ivory Coast)
- University of Antananarivo - Antananarivo Institute and Observatory of Geophysics

- INCAJU (Mozambique)
- Sesame Interprofessional Organisation in Burkina Faso – INTESEB
- Ivory Cashew Nuts – ICN
- Kingdom
- La Compagnie Fruitière - SCB Lupa (Mozambique)
- NAZI BONI Regional Vocational School (Burkina Faso)
- Madagascar National Parks (MNP)
- MPE-SA (Madagascar)
- MTN (Guinea-Bissau)
- Naturama – Friends of Nature Foundation (Burkina Faso)
- N'ZI River Lodge
- OCEAN
- National Office for the Environment - ONE (Madagascar)
- OLAM
- Professional Organisation of Livestock Farmers of Ferkessédougou – OPEF (Ivory Coast)
- Orange Mali & Côte d'Ivoire
- Organisation of Soutine for Rural Development - OSDRM (Madagascar)
- Positive Planet West African Cereal Network - ROAC
- Rainforest Trust
- S2 Service
- SCEB
- Permanent Executive Secretariat REDD+ - SEP REDD+ (Côte d'Ivoire)
- The Sustainable Trade Initiative – IDH
- Federal Union of Consumers of Côte d'Ivoire - UFCI
- Vétérinaires sans Frontières Belgique - VSFB (Belgium)
- VIAMO (Burkina Faso)
- Wildlife Conservation Society - WC
- ZAMACOM

- LuxDev (Luxembourg) Lutheran World Relief - LWR (United States)
- Metropolis of Lyon
- Ministry of Agriculture, Livestock and Fisheries (Madagascar)
- Ministry of the Environment and Sustainable Development – MINEDD (Côte d'Ivoire)
- Ministry for Europe and Foreign Affairs – MEAE
- Ministry of Living Environment and Sustainable Development of Benin – MCVDD
- Ministry of Petroleum, Energy and Renewable Energy – MPEER
- Ministry of Planning and Development of Côte d'Ivoire
- NESTLE
- OCEF Facility
- World Trade Organisation – WTO
- PARTNER AFRICA
- Peace Park Foundation
- Pur Projet
- Recyclivre
- Auvergne-Rhône-Alpes Region
- Haute Matsiatra Region (Madagascar)
- SIR
- STICHTING SOLIDARIDAD NEDERLAND
- STOA Infraenergy
- Stockholm Environment Institute - SEI (Sweden)
- SIDI
- SYMRISE
- TERE
- Terra Firma
- TERRA ISARA
- The Savannah Fruits Company (Ghana)
- The Tenure Facility
- TOUTON SA
- European Union – EU
- USAID (United States)
- USDA (United States)
- VALRHONA
- WOORD EN DAAD

- IOGA (Madagascar)
- Edouardo Mondlane University - FAEF Department of Agriculture and Forestry (Mozambique)
- World Resources Institute



Contact

Head office - Lyon

29, rue Imbert-Colomès
69001 Lyon - France
+33 (0)9 73 66 10 17

Montpellier

Maison de la télédétection
500, rue Jean-François Breton
34 000 Montpellier – France

Representation Burkina-Faso

Boulevard Général Charles de Gaulle,
opposite Juvénat Saint Camille Filles,
rue 28.291 villa No. 04 next to the National
Museum Ouagadougou - Burkina Faso
+226 63 40 29 48

Cameroon Branch

Near Canadian visa office, opposite Rotary
Club Bastos – Yaoundé CAMEROUN
+237 690 30 73 19

Ivory Coast Branch

8th floor Tour Wedge Les caddies
Cocody-Riviera Golf - Abidjan - Ivory Coast
+225 22 43 71 84

Mozambique Branch

Avenida Agostinho Neto, n°16
Maputo - Mozambique
+258 87 00 43 558

Madagascar Branch

Lot VE 26 L, Ambanidia
101 Antananarivo - Madagascar
+261 (0) 34 74 912 55

Senegal Branch

Fass Camp de Garde
Lot n°3960 /A - Kaolack – SENEGAL
+221 78 586 01 95